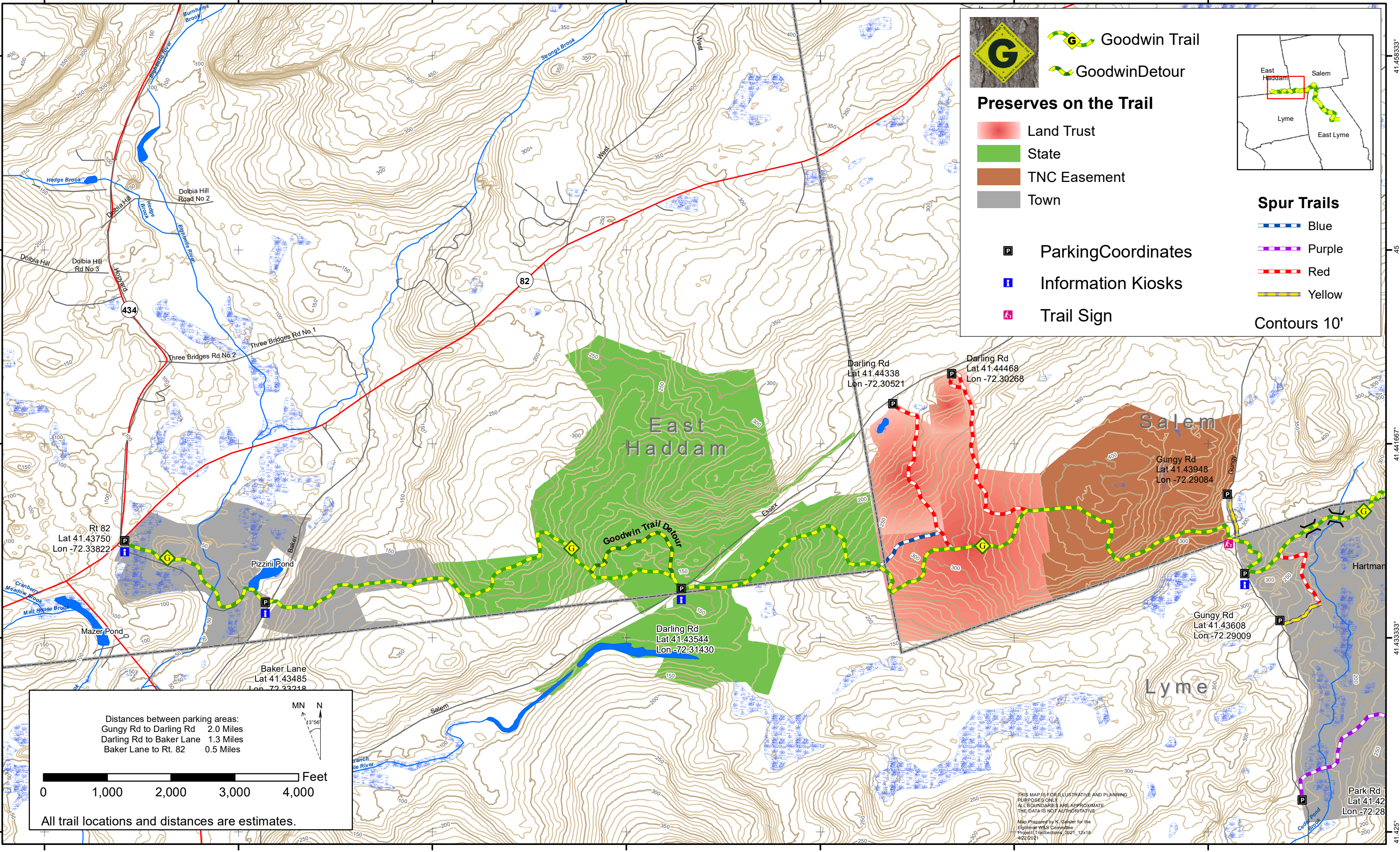


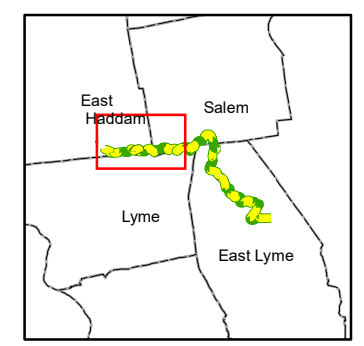
# RICHARD H. GOODWIN TRAIL - GUNGY RD TO RT. 82 SECTION



Goodwin Trail  
 GoodwinDetour

### Preserves on the Trail

- Land Trust
- State
- TNC Easement
- Town



### Spur Trails

- Blue
- Purple
- Red
- Yellow

- ParkingCoordinates
- Information Kiosks
- Trail Sign

Contours 10'

Distances between parking areas:  
 Gungy Rd to Darling Rd 2.0 Miles  
 Darling Rd to Baker Lane 1.3 Miles  
 Baker Lane to Rt. 82 0.5 Miles

MN N  
 13°56'

0 1,000 2,000 3,000 4,000 Feet

All trail locations and distances are estimates.

THIS MAP IS FOR ILLUSTRATIVE AND PLANNING PURPOSES ONLY. ALL BOUNDARIES ARE APPROXIMATE. THE DATA IS NOT AUTHORITY.  
 Map Prepared by K. Galati for the Eightmile W&S Committee  
 Project: Trail Sections 2021\_12x18  
 4/22/2021