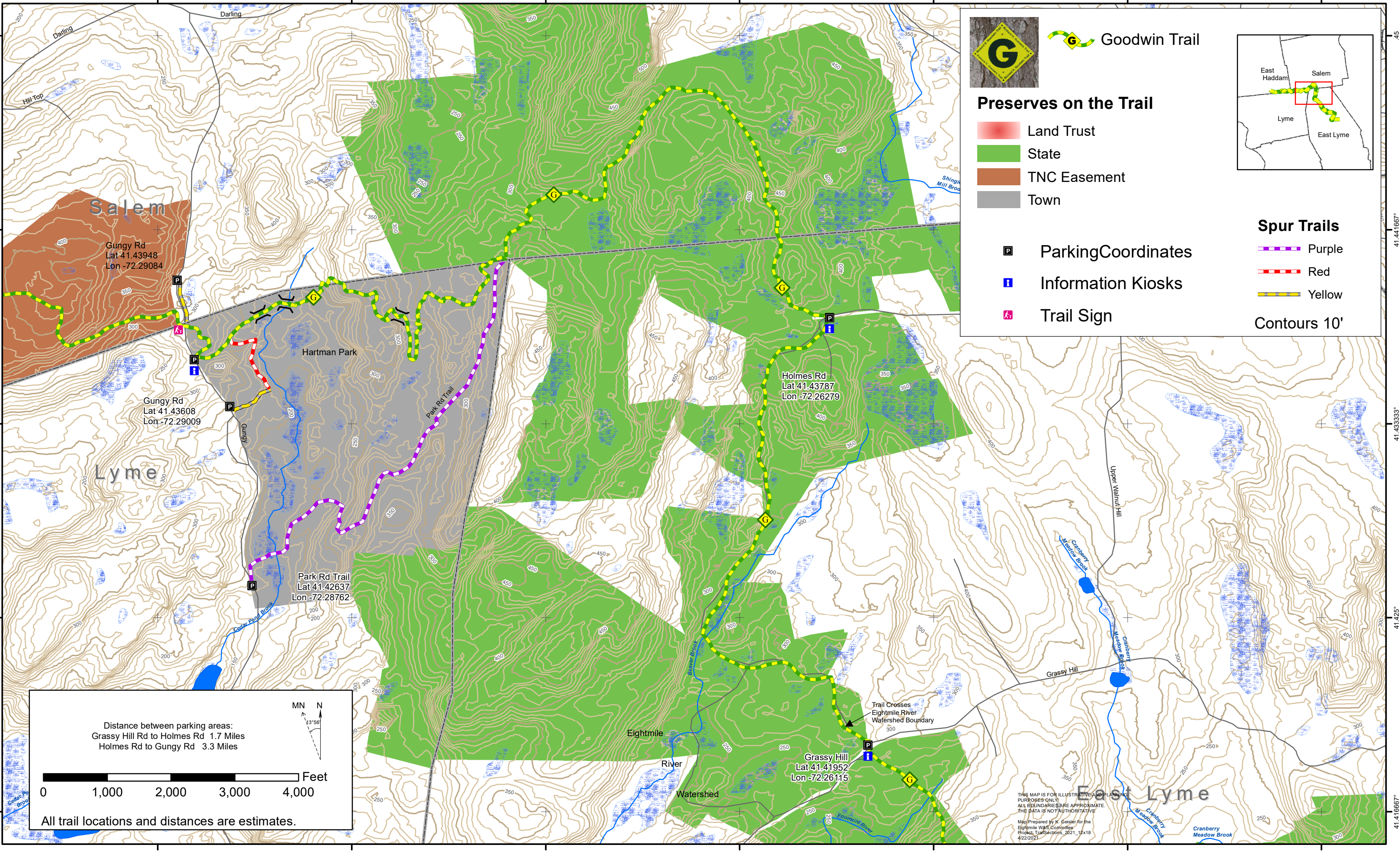


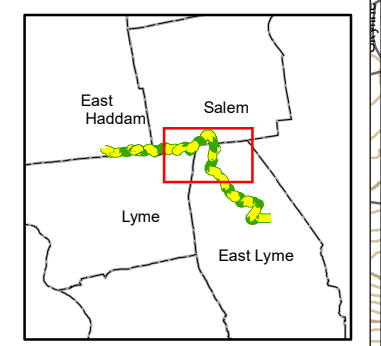
# RICHARD H. GOODWIN TRAIL - GRASSY HILL RD TO GUNGY RD SECTION



Goodwin Trail

### Preserves on the Trail

- Land Trust
- State
- TNC Easement
- Town



- ParkingCoordinates
- Information Kiosks
- Trail Sign

### Spur Trails

- Purple
- Red
- Yellow

Contours 10'

Distance between parking areas:  
 Grassy Hill Rd to Holmes Rd 1.7 Miles  
 Holmes Rd to Gungy Rd 3.3 Miles

MN N  
 13°56'

0 1,000 2,000 3,000 4,000 Feet

All trail locations and distances are estimates.

THIS MAP IS FOR ILLUSTRATIVE AND PLANNING PURPOSES ONLY. ALL BOUNDARIES ARE APPROXIMATE. THE DATA IS NOT AUTHORITY.  
 Map Prepared by K. Geisler for the Eightmile W&S Committee  
 Project: Trail Sections\_2021\_12x18  
 4/22/2021