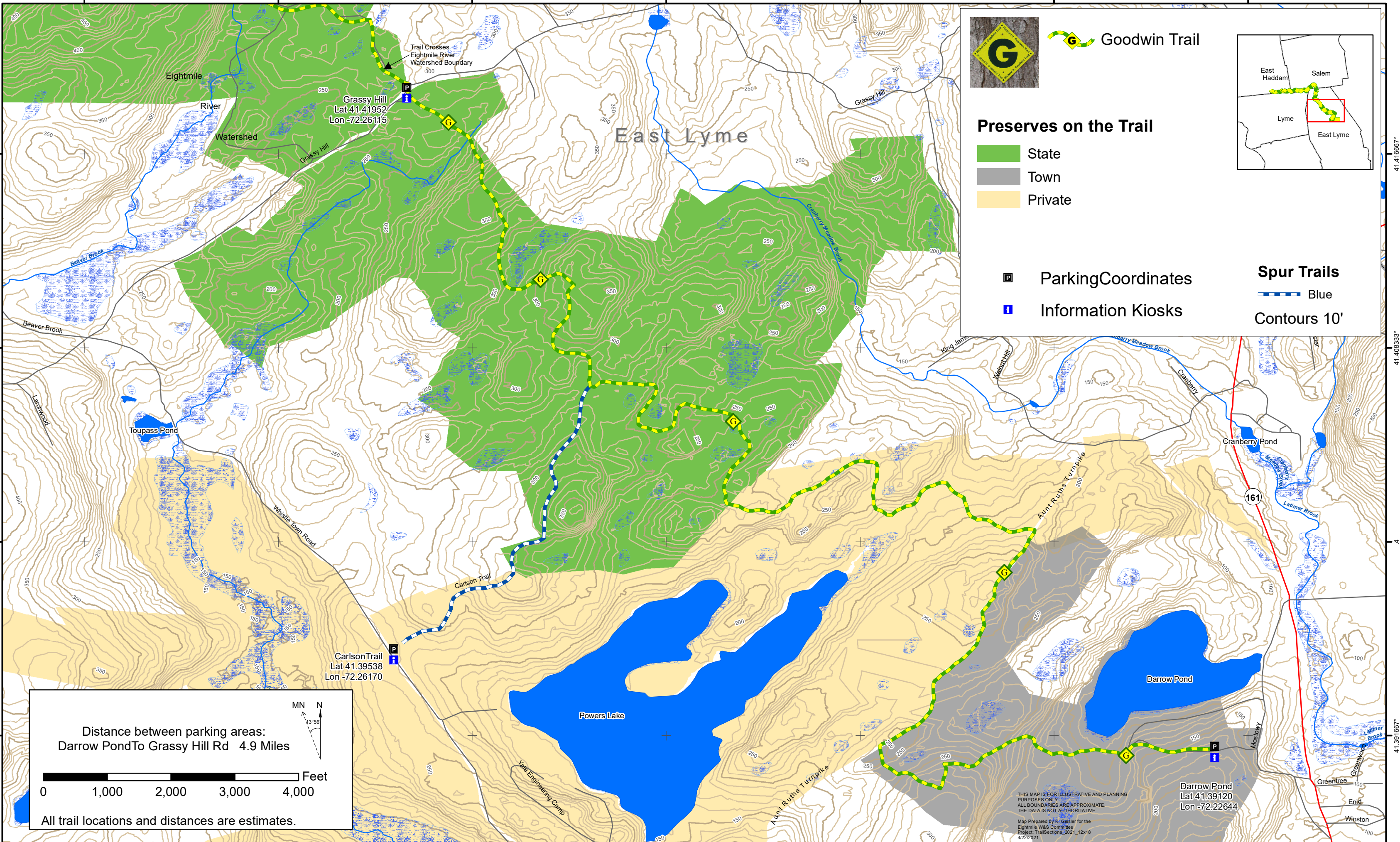


RICHARD H. GOODWIN TRAIL - DARROW POND TO GRASSY HILL RD SECTION



Goodwin Trail

Preserves on the Trail

- State
- Town
- Private

- P ParkingCoordinates
- i Information Kiosks

Spur Trails

- Blue

Contours 10'

Distance between parking areas:
Darrow Pond To Grassy Hill Rd 4.9 Miles

0 1,000 2,000 3,000 4,000 Feet

All trail locations and distances are estimates.

THIS MAP IS FOR ILLUSTRATIVE AND PLANNING PURPOSES ONLY. ALL BOUNDARIES ARE APPROXIMATE. THE DATA IS NOT AUTHORITATIVE.
Map Prepared by K. Galster for the Eightmile W&S Committee
Project: TrailSections_2021_12x18
4/22/2021