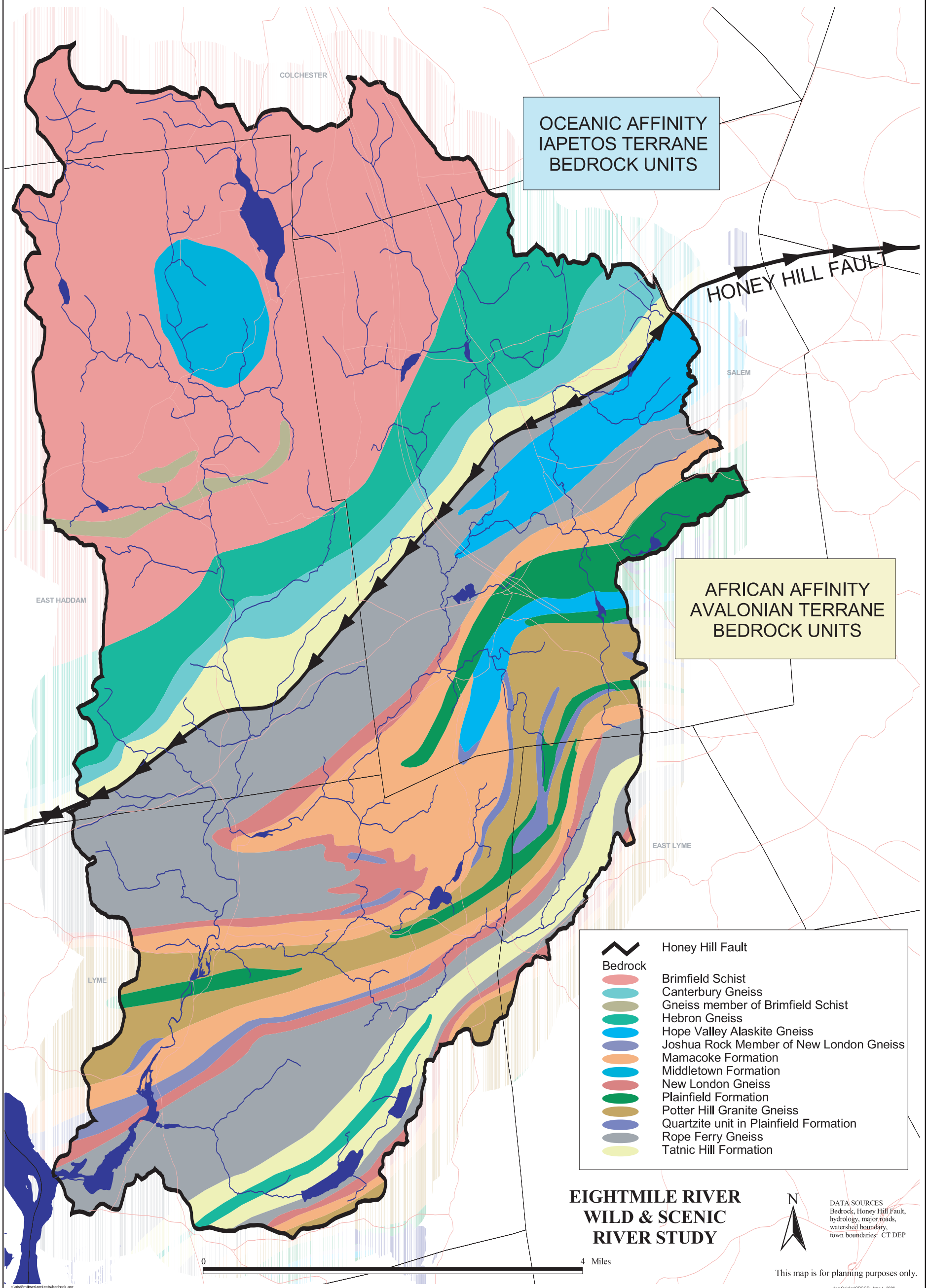


Bedrock Geology



OCEANIC AFFINITY
IAPETOS TERRANE
BEDROCK UNITS

AFRICAN AFFINITY
AVALONIAN TERRANE
BEDROCK UNITS

- Honey Hill Fault
- Bedrock**
- Brimfield Schist
- Canterbury Gneiss
- Gneiss member of Brimfield Schist
- Hebron Gneiss
- Hope Valley Alaskite Gneiss
- Joshua Rock Member of New London Gneiss
- Mamacoke Formation
- Middletown Formation
- New London Gneiss
- Plainfield Formation
- Potter Hill Granite Gneiss
- Quartzite unit in Plainfield Formation
- Rope Ferry Gneiss
- Tatnic Hill Formation

**EIGHTMILE RIVER
WILD & SCENIC
RIVER STUDY**

DATA SOURCES
Bedrock, Honey Hill Fault,
hydrology, major roads,
watershed boundary,
town boundaries: CT DEP

This map is for planning purposes only.

Ken Geister/CRCDD: June 1, 2006

MAP 6