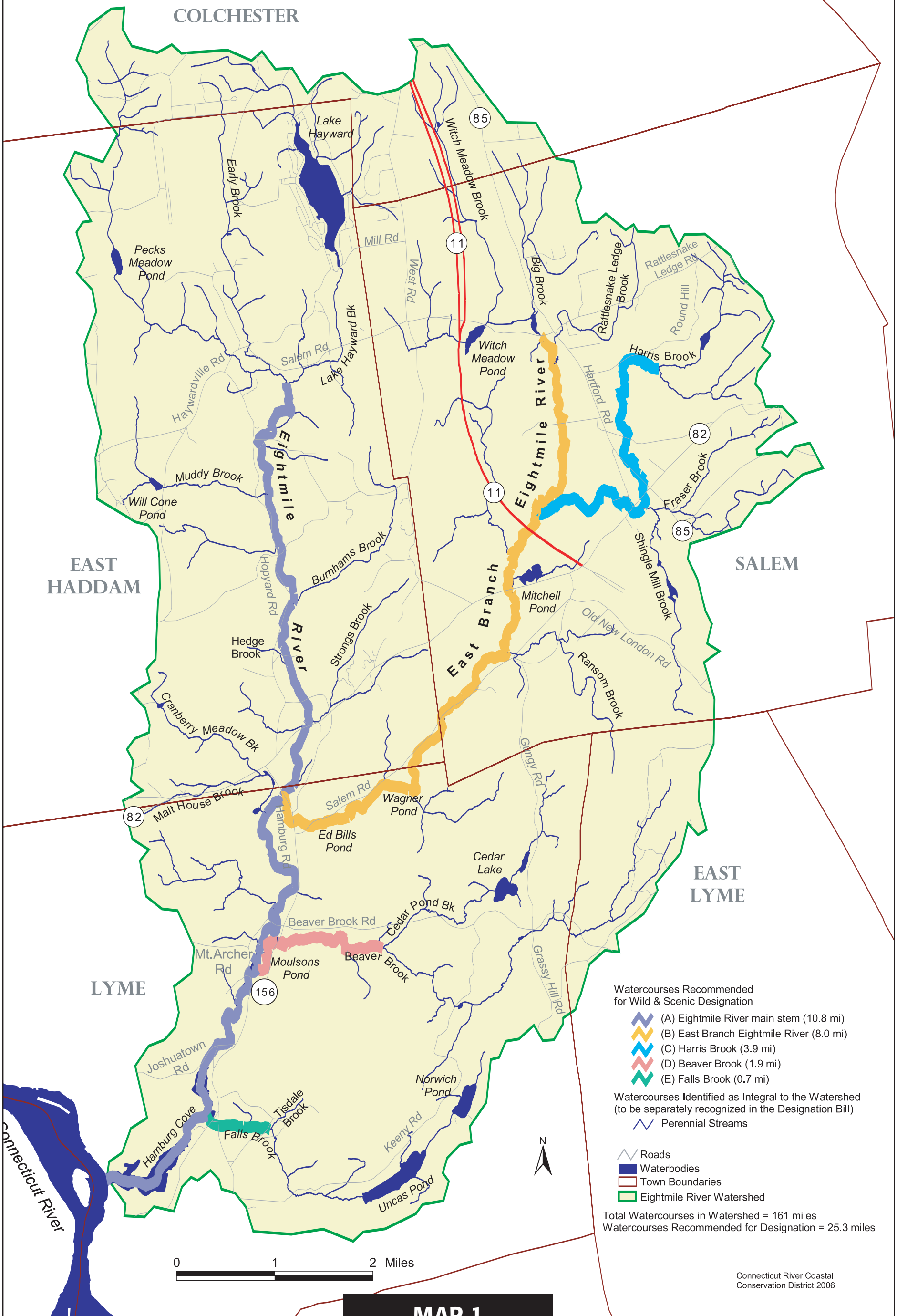


# Watercourses in the Eightmile River Watershed



### Watercourses Recommended for Wild & Scenic Designation

- (A) Eightmile River main stem (10.8 mi)
- (B) East Branch Eightmile River (8.0 mi)
- (C) Harris Brook (3.9 mi)
- (D) Beaver Brook (1.9 mi)
- (E) Falls Brook (0.7 mi)

### Watercourses Identified as Integral to the Watershed (to be separately recognized in the Designation Bill)

- Perennial Streams

- Roads
- Waterbodies
- Town Boundaries
- Eightmile River Watershed

Total Watercourses in Watershed = 161 miles  
 Watercourses Recommended for Designation = 25.3 miles