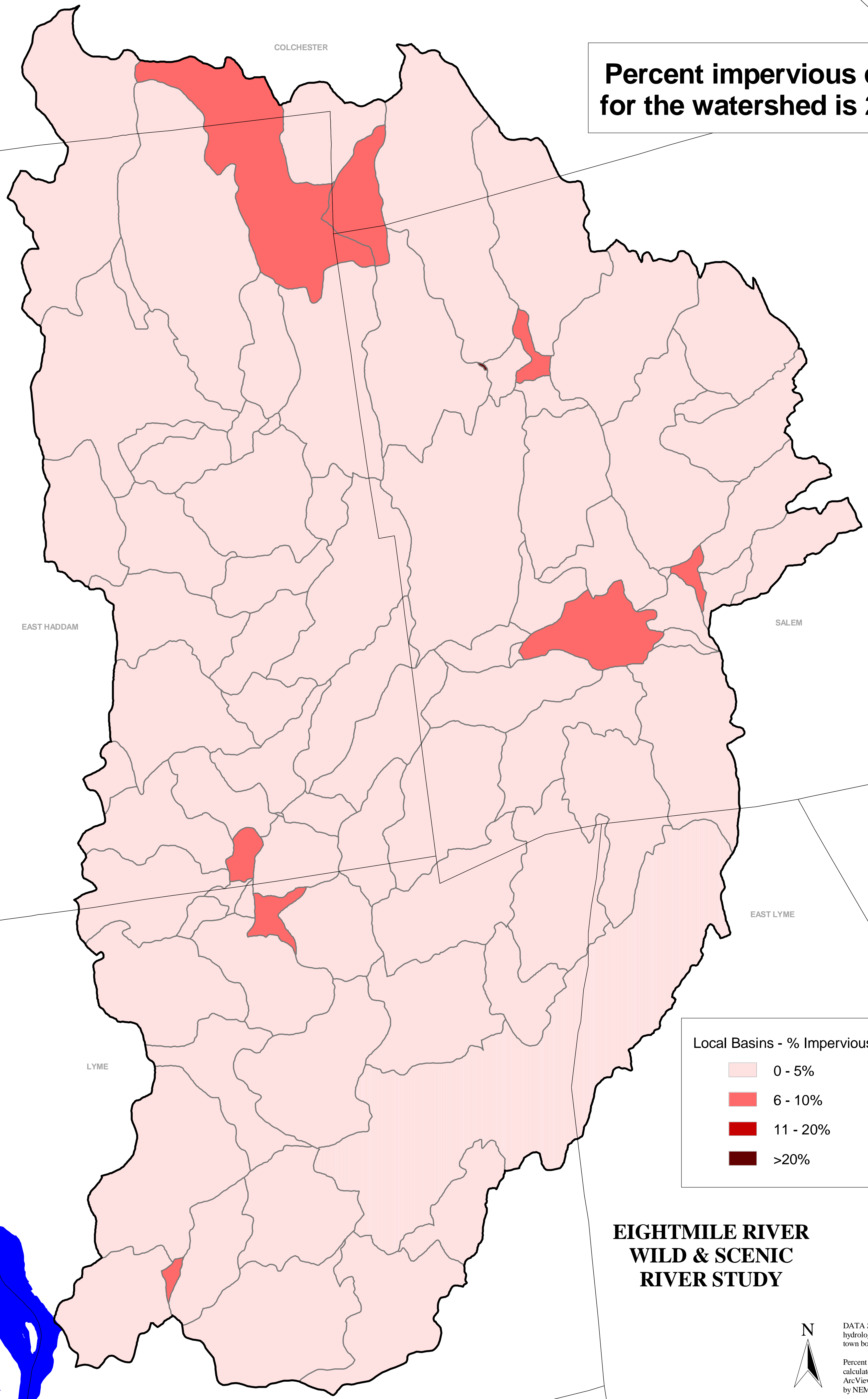






CURRENT IMPERVIOUS COVER OF THE EIGHTMILE RIVER WATERSHED

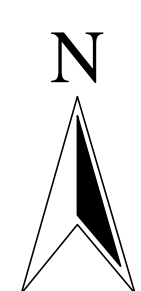


Percent impervious cover for the watershed is 2.97%

Local Basins - % Impervious Cover

	0 - 5%
	6 - 10%
	11 - 20%
	>20%

**EIGHTMILE RIVER
WILD & SCENIC
RIVER STUDY**



DATA SOURCES
hydrology, watershed boundary,
town boundaries: CT DEP

Percent of impervious surface
calculated with ISAT extension for
ArcView 3.3. Coefficients revised
by NEMO for the 2002 Land Cover.

0 2 4 Miles

1:27000

This map is for planning purposes only.